








# What's happening in Tunstall?

Last year, we held a public consultation on proposals to improve the public spaces around Tunstall High Street. We've now updated our plans based on your feedback. The updated proposals include:

-  New planting, event spaces and pedestrian areas in Tower Square.
-  A new lawn space in front of the clock tower.
-  New tree planting and space for outdoor market stalls on Butterfield Place.
-  4 Disabled parking bays retained on Butterfield Place.
-  Additional car and cycle parking in tower square behind the clock tower.
-  Wider pavements on High Street outside the Library.
-  No changes to traffic lights on Scotia Road.



# The Plans for Tunstall Town Centre



# Tower Square

The revitalised Tower Square will become a welcoming space to sit and relax, play, and hold events. We will create an open green space near the historic clocktower, with new seating, trees, lawns and flowerbeds providing an inviting and accessible area to rest or play.

The front of the square will be re-paved to create a space for markets and events, with additional seating and a wider pavement along this side of High Street.

Non-emergency traffic will no longer be able to enter Tower Square from High Street, and will instead enter from Forster Street at the back of the square. 12 regular parking spaces and two disabled bays will be added to the back of the square, behind the clocktower. Overflow parking will be provided on Wesley Street.

This allows the sides of the square to be used for outdoor seating for cafes, and makes the area easier to move around for pedestrians and cyclists.



Precedent image showing possible seating styles

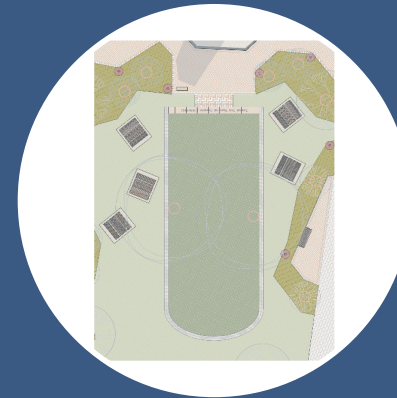
# Celebrating Tunstall's Heritage

## Town Hall Footprint

The first town hall in Tunstall was completed in 1816 and stood in the middle of Tower Square. The new square will include an interpretation of the old town hall's footprint, with wildflower and tree planting in the centre.



Tunstall First  
Town Hall



Footprint in  
Tower Square



Wildflower planting  
celebration

## Clarice Cliff

Clarice was born on January 20th 1899 in Tunstall, Stoke-on-Trent and started work at the age of 13 in the local potteries. Today she is regarded as one of the most influential female ceramics artists of the 20th Century and her work is collected around the world.

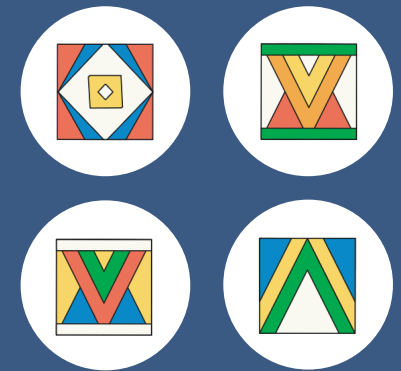
The new paving in Tower Square will celebrate Clarice Cliff using patterned tiles inspired by her unique style.



Innovative, colour-rich  
designs



Geometric art  
deco patterns



Artworks to be included  
in paving

# Butterfield Place

Butterfield Place will be upgraded to provide a welcoming entrance to the town centre from Scotia Road, with new greenery and paving.

Existing trees will be retained, with new seating and flowerbeds added to each end of Butterfield Place. New high-quality paving in between will create a space for outdoor market stalls and small events.

Four existing disabled parking bays will be retained to allow easy access to the market and High Street.



Precedent image showing possible tree species



# Future of Tunstall Town Centre

